



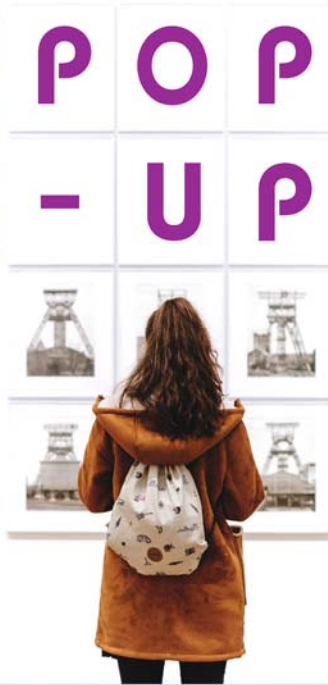
FALL CITY HISTORICAL SOCIETY

P.O. Box 293, Fall City, WA 98024

historylives@fallcityhistorical.org

www.fallcityhistorical.org

MUSEUM FALL CITY POP-UP



For ONE WEEK ONLY, there's a MUSEUM in your library!

The Fall City Historical Society will share selected objects and photos from collections in the library meeting room. See glimpses of early schools, home life and local business as you tour the museum.

Monday, September 16-Saturday, September 21 Fall City Library

Our thanks to KCLS!

Thanks to the generosity of King County Library System and especially the Fall City Library, the library meeting room will be available during a week in September for us to share some of the items in our collections.

Fall City Historical Society has not attempted to create a Fall City Museum because of the considerable expense and staffing demands it would require. Because of this, we have not sought or accepted a lot of large objects. But it is an unexpected treat to have this opportunity to share some "favorite things"!

PLAN TO STOP BY THE POP-UP MUSEUM...

Sept. 16th through Sept. 21st



MEMBER AND VOLUNTEER APPRECIATION!

About 30 people turned out on August 11th to celebrate and appreciate our members and volunteers. Donna Driver-Kummen hosted the event, and led tours of her amazing garden. The food was great, the company enjoyable, and it was a pleasure to re-unite with folks we had not seen in some time and get to know others.



It was clearly so much fun that it needs to be an annual event...if you fall into one of these two special categories, watch for your invitation next summer!



Support for our work from King County Heritage 4Culture is gratefully acknowledged.





FALL CITY HISTORICAL SOCIETY

P.O. Box 293, Fall City, WA 98024

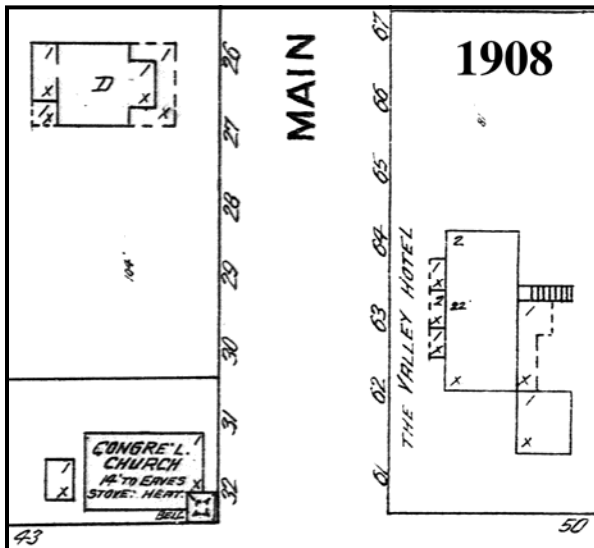
historylives@fallcityhistorical.org

www.fallcityhistorical.org

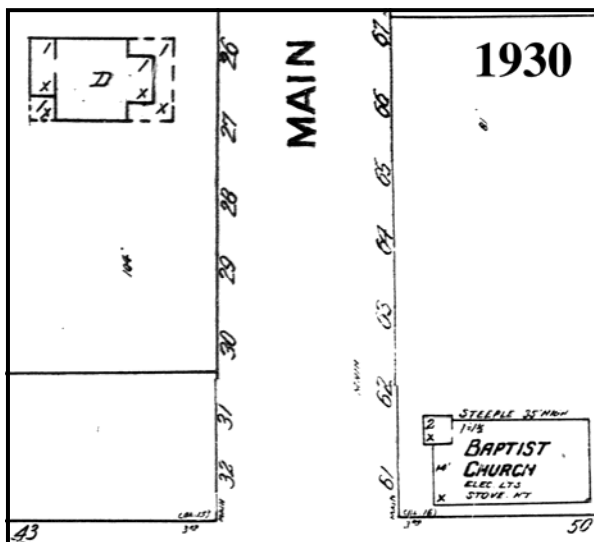
A new research tool...

Sanborn Fire Insurance maps

During our work with Historic Seattle staff, we were delighted to discover some early maps of Fall City, available through a database at King County Library. Starting in 1866, the Sanborn Company created maps showing buildings with details of construction, in approximately 12,000 towns and cities in the U.S. For Fall City, only 1908 and 1930 maps are available.



The two map segments at left for 1908 and 1930 show the corner of Main (337th SE) and 3rd (SE 43rd PL). The Neighbor-Bennett House is seen in the upper left in both maps. In 1908, the Valley Hotel (known from ads and a single photo) is shown on the right, and the church is on the west side of Main. By 1930, the hotel is gone, having burned later in 1908, and the church has been moved across the street.



Another building of interest, shown on both the 1908 and 1930 maps, is the MWA (Modern Woodmen of America) Hall, on the southwest corner of Orchard (338th SE) and 3rd St (SE 43rd PL), across 338th SE from the Moore-Parmelee House. It was built in about 1908, and later became the Fall City Opera House from about 1915-1935. It was a popular venue for many events, but is recorded only by one poor photograph, shown below.

