

FALL CITY HISTORICAL SOCIETY

P.O. Box 293, Fall City, WA 98024

fallcityhistorical@juno.com

www.fallcityhistorical.org



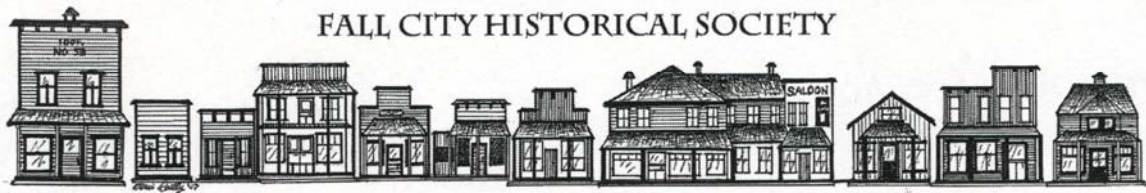
New Photos donated

Our thanks to Karen Kinsley, descendant of the Stephenson family who came to Fall City in 1884, for sharing these photos. The top photo is titled “**Log Sawin Contest, July 4th, 1911, won by Wm. F. Cook, Fall City, Wash.**” A later note added with the photo identifies two of the contestants as Stephensons.

The second photo (below) is simply titled “**Stephenson Bros., Falls City, Wash.**” No date is given. One could guess that it is an earlier photo, when “Falls City” was commonly used. This is a puzzling “logging” photo, with the wagons piled high with small-diameter trees, and cordage and cu.ft. numbers written in for each load. We shared it with Erik Erickson, who is widely knowledgeable about logging in King County. His guess was that the wood was cut to sell for pulp. His records show a pulp mill in Everett in the early 1900s, and he suggested that they might be sent by boat down the Snoqualmie, since that was much cheaper than railroad costs.

(Note: Both photos cropped.)



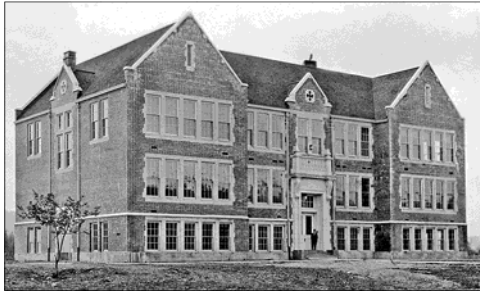


FALL CITY HISTORICAL SOCIETY

P.O. Box 293, Fall City, WA 98024

fallcityhistorical@juno.com

www.fallcityhistorical.org



Brick School sign installed

At last the **Brick School** sign is in place at Fall City Elementary School, by the Gymnasium. Thanks to the Snoqualmie Valley School District Maintenance folks for an attractive installation.

From 1916 through 1944, students attended the Brick School from kindergarten through High School graduation. After 1944, the elementary grades continued to use the school for many years.



Football team, 1936-37



King County

Community Service Area Program

King County Community Service Area Program

Our two large (20" by 30") signs, **Early Schools** and **Fall City Brick School**, have been funded by grants from the **KC Community Service Area Program**, set up to help unincorporated areas with projects which serve the community. We really appreciate the grants which funded the added expense for these large signs.

Support for our work from King County Heritage 4Culture is gratefully acknowledged.

