

2008 FALL CITY CALENDAR



FALL CITY WASH.

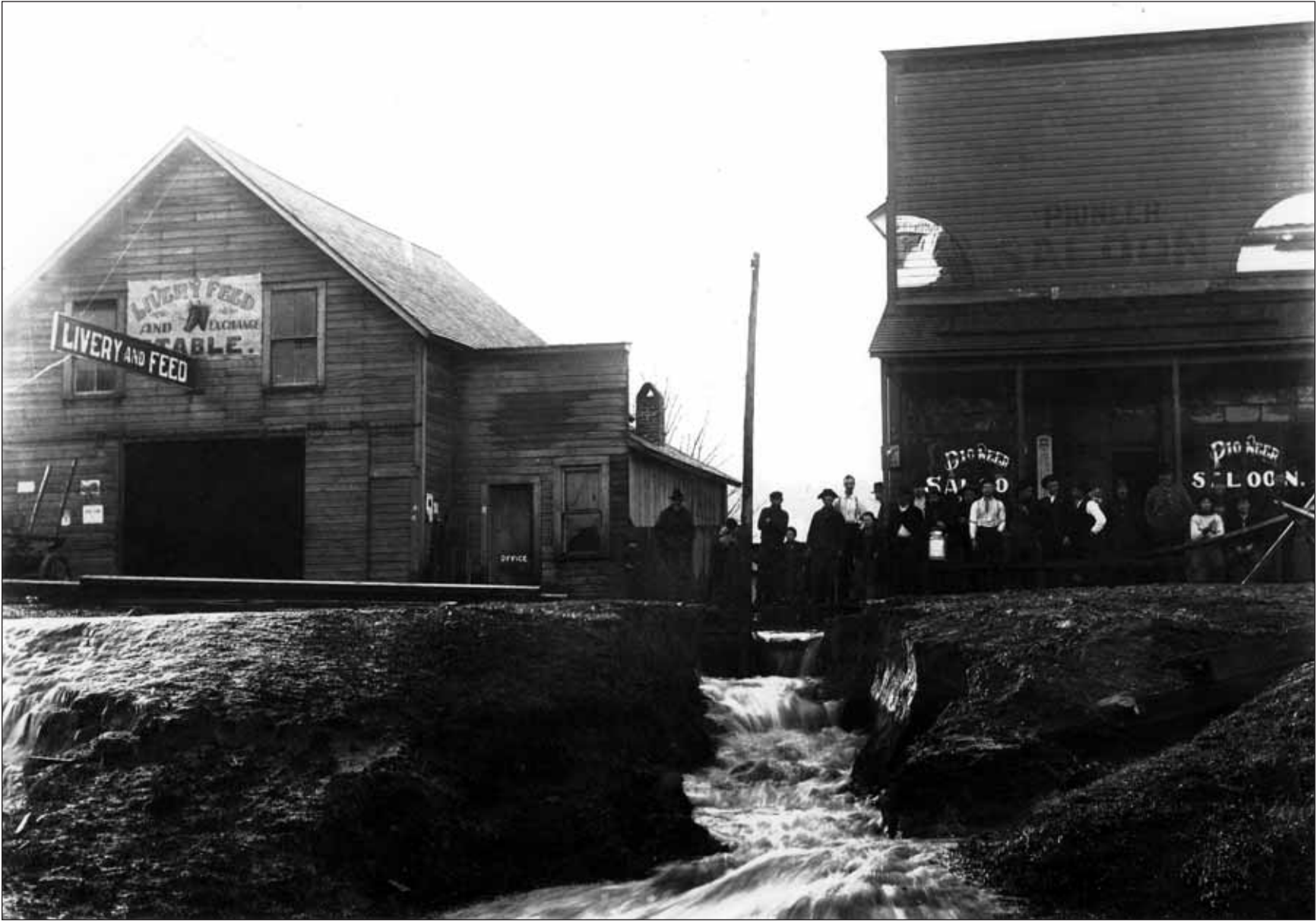
ALL PROCEEDS TO BENEFIT THE FALL CITY HISTORICAL SOCIETY

\$10

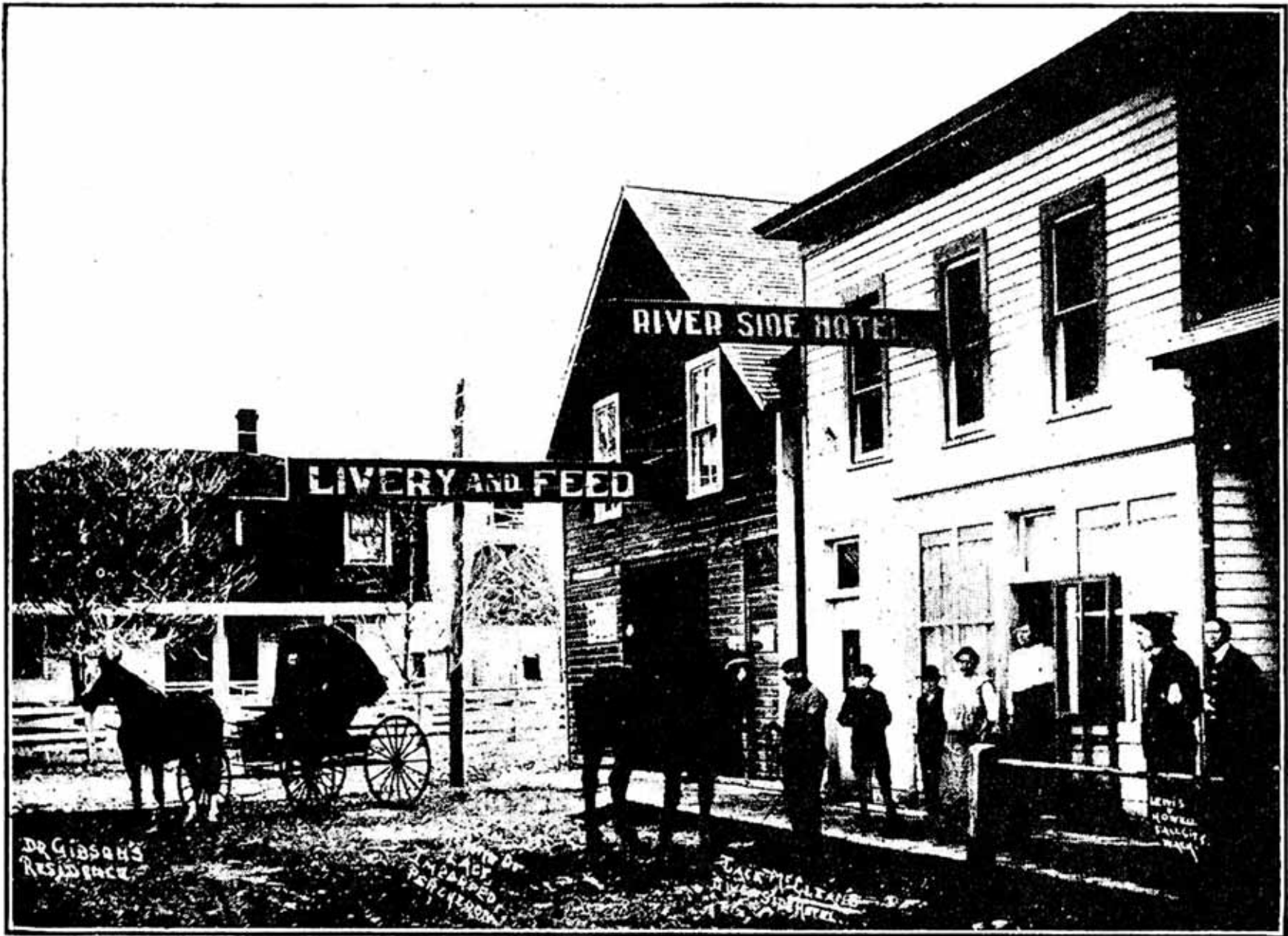


River Street, looking west, c. 1920. (Jack Kelley)

The Yellowstone Trail, the first transcontinental highway from Plymouth Rock, Massachusetts, to Seattle, Washington, came east over Snoqualmie Pass and passed through Fall City. From Fall City, the Yellowstone Trail went on through Redmond (where a portion of it remains in the Historic Brick Road) and to Kirkland, where tourists could take the King County Ferry across Lake Washington to Seattle. In 1925, an alternate route to Seattle, named the Sunset Highway, went south from Fall City through Preston, Issaquah, and Renton, around the south end of Lake Washington to Seattle.



Raging River comes through town, c. 1906. (Jack Kelley)



Hotel and livery barn of John McLean, Fall City. (The Coast magazine, 1906, courtesy of Rowan Chisholm)



Bars and saloons, early 1900s

The Pioneer Saloon, shown in the upper left photo (courtesy of Suzanne Badten), was located at the site of the current Last Frontier Saloon. It was started by Peter Stokes and his son, Frank.

The Olympia Bar, next door to Cheney's Drug Store, in the lower left photo (courtesy of Dorothy Dafler and Lola Anderson), was operated by the Bertrand brothers. (The first saloon of record in Fall City was built by the Bertrand brothers in 1880 on the corner of Main and River Streets; that building was sold in 1895.)

The Saloon at Hotel Fall City, in the upper right photo (courtesy of Jack Kelley), is thought to have been part of the hotel. Shortly after this photo was taken in 1906, the saloon and the hotel buildings were connected.

Jack's History of Fall City, pp. 193–194



Fall City Library

The Fall City Library began in 1944, sponsored by the Fall City Study Club, and was located in the United Methodist Church (upper left photo, from the Study Club Scrapbook).

In 1957, in an amazing community effort led by the Study Club, a small house (upper center photo, also from the Study Club Scrapbook) was moved and refurbished for the first library building.

The second library building (upper right photo, from the *Seattle Post-Intelligencer* Collection, Museum of History and Industry) was accomplished by the Study Club, community fundraising, and matching funds from King County.

In 1986, the King County Library System bought and remodeled the former SeaFirst Bank building (at right, photo courtesy of Ruth Pickering). It served as the most recent Fall City Library until its demolition in May 2007. Now that it is “history,” we hope that a new one will replace it in 2008.



Fall City Centennial

In June 1972, Fall City celebrated the centennial of being “put on the map” by the establishment in 1872 of the Fall City Post Office in the trading post owned by George and Edward Boham. (See the 1877 map of the Washington Territory for the month of July.)

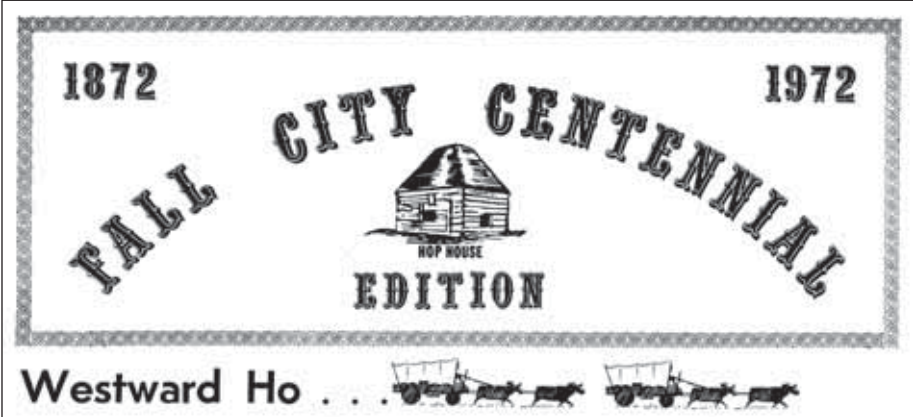
As part of the Centennial Celebration, the Fall City Study Club commissioned a commemorative plate (front and back shown at left, photos by Alan Bauer), and the *Valley Record* published a 24-page supplement (cover graphic shown below) filled with historical photographs and family stories, both from the Snoqualmie Valley Historical Museum collection and from many Fall City sources. The supplement also gave the schedule of events for the fun-filled three-day celebration.

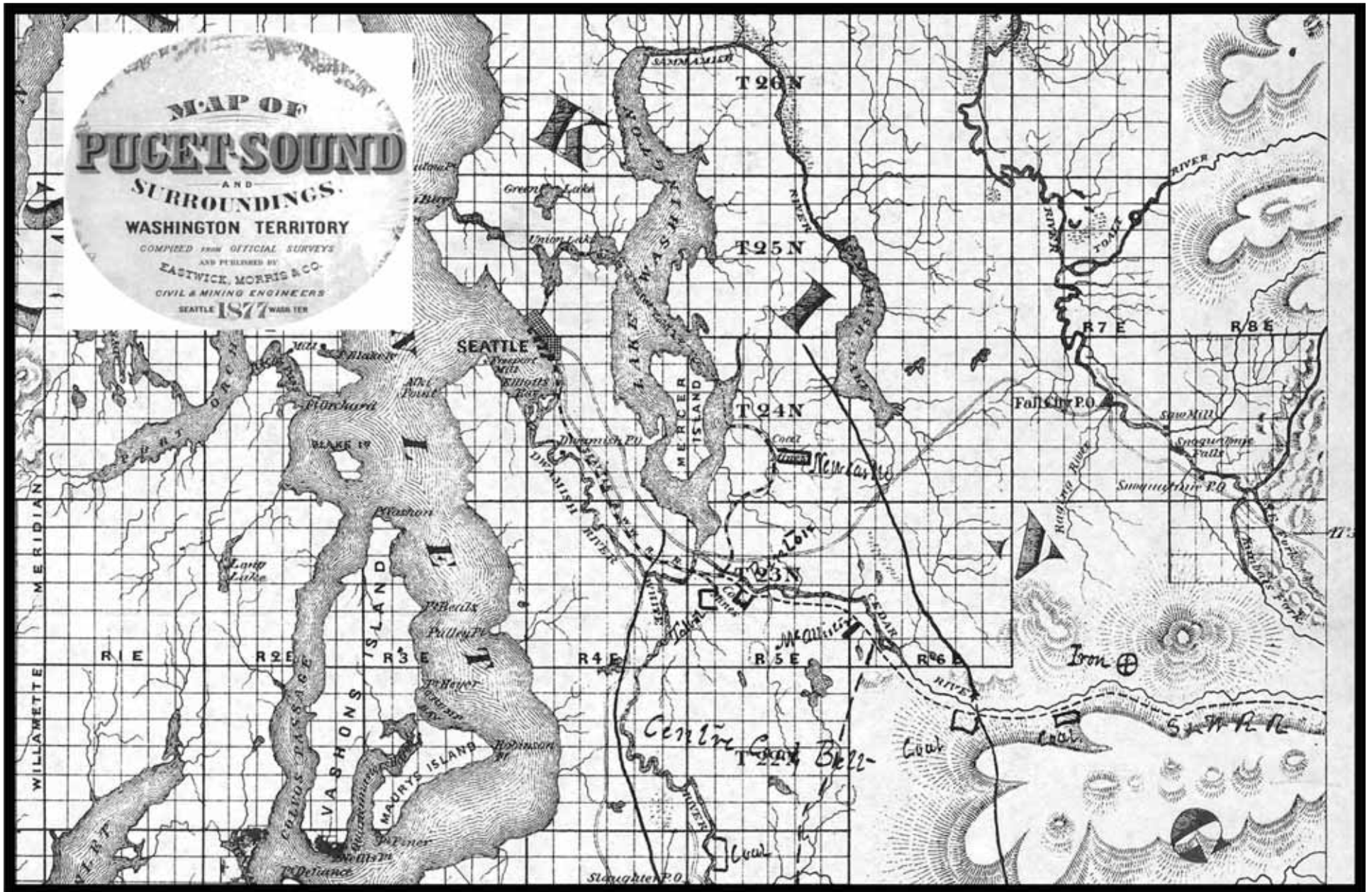
Jack's History of Fall City, pp. 312-314



Nestled among the Evergreens on the banks of the Snoqualmie River, is Fall City — geographically the center of the Snoqualmie Valley. In the 1580's, the Sternwheeler brought cargo from Seattle up the river to Fall City to supply the Valley's needs. The little Schoolhouse and the Hophouse are remembered Historical Sites and the Totem Pole is significant of the Snoqualmie Valley's Indian background. The Church is still the "Community" Church of the area.

Fall City Study Club
 Organized — 1922
 Federated — 1925





King County and the Snoqualmie Valley as shown on 1877 "Map of Puget Sound and Surroundings." (Jack Kelley)



*Fall City Girl Scout Trip,
Ocean Park, WA, Summer 1939.
(Both photos: FCHS, donated
by Emma McCurry; taken
by Emma Jean Satterlee)*

Identifications (left to right):

Top photo: On truck: Janet Moore, Geraldine Erickson, Virginia Craig, Grace Parmelee, June Woods, Kerstine Johnson, Donna Bennett, Iva Bush. In front: Florence Gochnour, Carrie Thomas, Charlie Hager (friend of Carrie Thomas), Anne Johnson (scout leader).

Lower photo: June Woods, Virginia Craig, Donna Bennett, Janet Moore, Georgia Satterlee, Grace Parmelee, Iva Bush, Geraldine Erickson.





Fall City Brick School, Gymnasium, and Totem Pole, c. 1938. (Snoqualmie Valley Historical Museum)



Students and teachers at the White School, 1900. (FCHS, donated by Emma McCurry)

This wonderful photo was given to Emma McCurry by Iva Bush. At the bottom of the photo is written:

"Mr. Tilton, teacher" (front left)

"Lee Bush" (marked with check, second from left, back row)

"All 8 grades at 4th and James"

"Iva Bush" (marked with x, back row, second from right)

"Geo Rutherford" (marked with x, back row, far right)

l-r, front row

*Mavis Cochran
Evelyn Lee
Georgia Morton
Genevieve Balby
Agnes Spill
Josephine McCreedy*

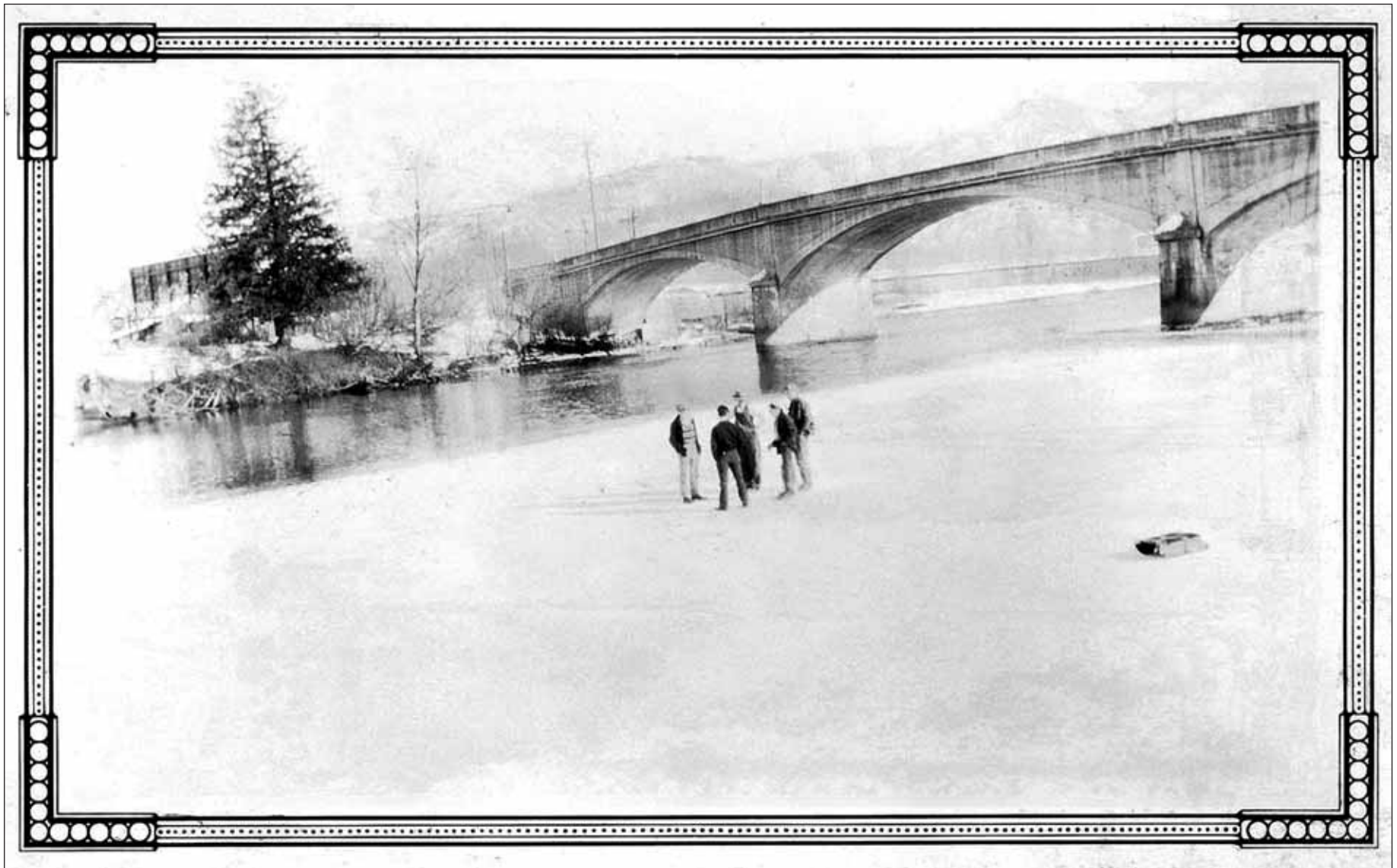
*Alex McNeilly
Hermia Thompson
Mildred Stenhamer
Edwin Opetad*

l-r, back row



Teachers at the Brick School, c. 1930. (FCHS, donated by Les Morton)

The teachers' names were written on the back of the photo by Georgia Morton, Les Morton's mother, who taught in Fall City for many years.



Ice below the Snoqualmie River Bridge at Fall City, Winter 1927. (Jack Kelley)